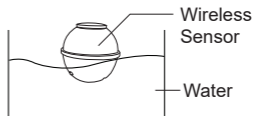



# SENSOR CONNECTION NOTE

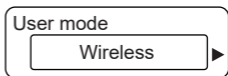
**NOTE:** When the wireless sonar sensor take a long time (above 30 seconds) connect to the main unit, pls re-code device.



**Re-code procedures as below:**

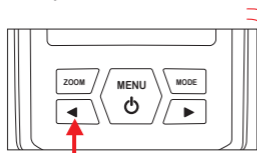
1. Place the new wireless sonar sensor in the water to turn on.



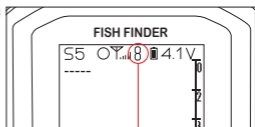
2. Turn on the main unit  and enter the normal detection interface (Wireless mode).



3. Press and hold the  button on the main unit, after 4 beeps and then release the  button. The number at the top of the screen starts to count from 1 to 16.



Press and hold



number 1-16 loading

4. When the number stops counting, re-coded procedures is successful. Detection information will appear on the screen of the main unit.

**SCAN THE QC CODE**  
to watch the Tutorial Video

