

# FF918-CWL Boat Bait Fish Finder

## 300M Wireless Range Operations Manual





# FF918-CWL Boat Bait Fish Finder 300M Wireless Range Operations Manual


## 1. Thank you for choosing FF918-CWL boat fish finder.

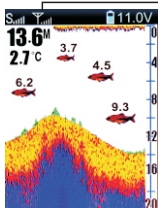
This amazing product is especially designed for amateur and professional fishermen alike, to find out the location of fish, depth and bottom contour of water.

The unit can be used in ocean, river or lake and is fantastic for detecting schools of fish in any particular area.

Using amazing and innovative technology, this portable fish finder is the ideal tool to bring the fish to you!



This user mode allows you to operate the FF918CWL Long-distance wireless signal tower and cable sonar sensor. When signal indicator {  } is displayed on the screen, the unit is in Long-distance Wireless mode.



wireless sonar sensor signal connect indicator

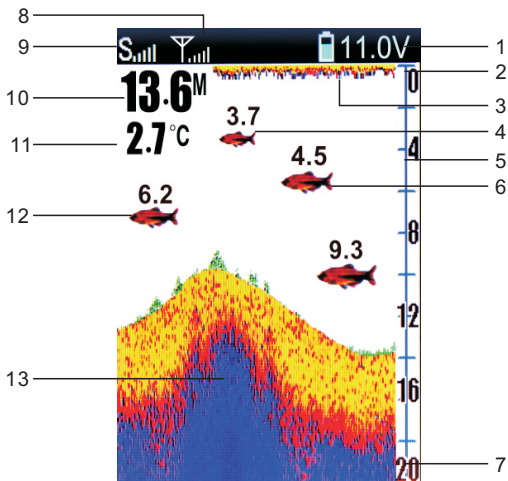
## **2. Using the Wireless user mode**

This FF918-CWL fish finder is designed to be used with bait boat. You only simply install the Long - Distance signal tower to your bait boat, power on the signal tower, then you can power on your fish finder and enjoy fishing.

## **3. Display View**

The FF918-CWL displays underwater information in an easy-to-understand format. The top of the display corresponds to the water surface at the transducer, and the bottom of the display corresponds to the Depth Range automatically selected for the current water depth. The Bottom Contour varies as the depth under the boat changes. Digital readouts provide precise information for depth, fish and water temperature.

As the boat moves, terrain and bottom composition variations are displayed. Fish, baitfish and thermoclines (underwater temperature changes) are displayed when detected. Underwater conditions vary greatly, so some experience and interpretation is needed to realize all the benefits of the FF918-CWL use the picture as a guide to the most common conditions and practice using the FF918-CWL over known bottom types.



- 1-Battery capacity
- 2-Upper Zoom Range
- 3-Water Surface Line
- 4-Small Fish Icon
- 5-Depth ruler
- 6-Medium Fish Icon
- 7-Lower Zoom Range

- 8-Signal Indicator
- 9-Sensitivity
- 10-Water Depth
- 11-Water Temperature
- 12-Large Fish Icon
- 13-Bottom Contour

## 5.Powering ON and OFF

Press last 3seconds and release the POWER-MENU key to power the FF918-CWL on. Press and hold the POWER-MENU key until the unit shuts down to power off.



1-Up arrow key


2-Mode key

3-Power/Menu key

4-Sensitivity key

5-Down arrow key

6-light Key

When the FF918-CWL powers on, the  will temporarily display on screen last for 3 seconds. Then

will show  .

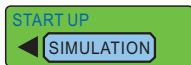
From this menu, use the arrow keys to select either Start-Up, Simulation.

If you do nothing, the unit will default to normal on the water use.

**-Use Start-Up for on the water use.**



**-Use Simulation for learning how to use the system with simulated sonar data; access Simulator by pressing the Down Arrow Key once**



## 6. The Menu System

A simple menu system allows you to access your FF918-CWL adjustable settings. To activate the menu system, press the POWER-MENU key.

Press the POWER-MENU key repeatedly to display the FF918-CWL menu settings, one at a time. When a menu setting is on the display, use the UP and DOWN Arrow keys to adjust the menu setting. Menu settings are removed from the screen automatically after several seconds. In Normal operating mode, most menu settings

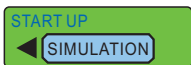
saved to memory will not return to their default values when the unit is turned off. See individual menu choices for more information.

**NOTE:** Each time the POWER-MENU key is pressed, the backlight momentarily illuminates for easy viewing at night. Adjust the Brightness menu setting to keep the backlight on.

## 6.1 User mode---



Use the User Mode menu choice to change between these three user modes.



## 6.2 Sensitivity---



Press the POWER-MENU key until SENSITIVITY appears. Sensitivity controls how much detail is shown on the display. Increasing the sensitivity shows more sonar returns from small baitfish and suspended debris in the water; however, the display may become too cluttered. When operating in very clear water or greater depths, increased sensitivity shows weaker returns that may be of interest. Decreasing the sensitivity eliminates the clutter from the display that is sometimes present in murky or muddy water. If Sensitivity is adjusted too low,

the display may not show many sonar returns that could be fish. (1 –9).

### 6.3 Depth Range---



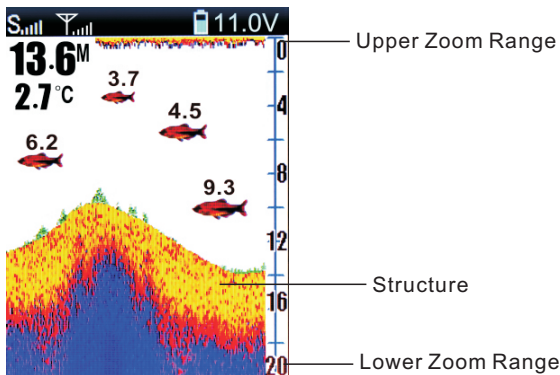
Press the POWER - MENU key until DEPTH RANGE appears. Automatic is the default setting. When in automatic, the lower range will be adjusted by the unit to follow the bottom. (Auto, 1-100)

NOTE: In manual operation, if the depth is greater than the depth range settings, the bottom will not be visible on the display. Select AUTO to return to automatic operation.

### 6.4 Zoom---



Press the POWER - MENU key until ZOOM appears. Select Auto to magnify the area around the bottom in order to reveal fish and structure close to the bottom that may not be visible during normal operation. When ZOOM is set to Auto, the upper and lower Depth Ranges are automatically adjusted to keep the area above and below the bottom on the display. Select Off to return to normal operation. (Off, Auto, 1-100).



There is also a series of manual ranges which can be selected. The manual depth ranges are determined by the present depth conditions.

### 6.5 Shallow Alarm ---

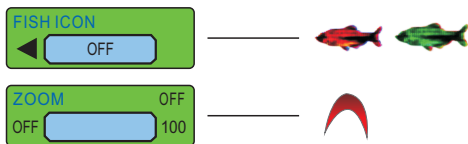


Press the POWER-MENU key until Shallow Alarm appears. Select OFF for no Depth Alarm, or select 1 to 100 meters to set the alarm depth. An audible alarm sounds when the depth is equal to or less than the setting. (Off, 1-100)

### 6.6 Fish Icon ---



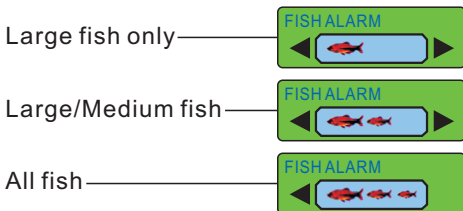
Make sure press the POWER-MENU key until Fish Icon appears. Select either Off to view “raw” sonar returns, or On to view Fish symbols. Fish Icon uses advanced signal processing to interpret sonar returns, and will display a Fish Symbol when very selective requirements are met. A select number of possible fish returns will be displayed with their associated depth. (On, Off).



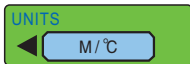
## 6.7 Fish Alarm---



Press the POWER-MENU key until FISH ALARM appears. Select Off for no fish alarm, or one of the following symbols to set the alarm. An alarm will sound when the FF918 detects fish that correspond to the alarm setting. Fish Alarm will only sound if Fish ID+ is also set to On. (Off, Large, Large/Medium, All).



## 6.8 Units---



Make sure press the POWER-MENU key until UNITS appears. UNITS selects the units of measure. ( Feet/F, Meters/C, Feet/C, Meet/F ,where F stands for Fahrenheit and C stands for Celsius )

## 6.9 Color Tone---



Make sure press the POWER-MENU key until Color Tone appears. Selects the method used to represent the bottom and structure on the display.

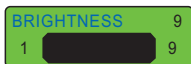
(Red, Green, Blue, Orange, Grey)

## 6.10 Battery Alarm ---



Make sure press the POWER-MENU key until Battery Alarm appears. Select Off or 8.6 to 13.5 Volts. Battery Alarm sounds when the input battery voltage is equal to or less than the menu setting. ( Off , 8.6 to 13.5 Volts )

## 6.11 Brightness---



Press the POWER-MENU key until Brightness appears. Use the backlight for night fishing. Select 1-9 to activate the backlight at the desired level.

## **7. Maintenance**

Follow these simple procedures to ensure your FF918-CWL continues to deliver top performance.

**7.1.** If the unit comes into contact with salt spray, wipe the affected surfaces with a cloth dampened in fresh water.

**7.2.** Do not use a chemical glass cleaner on the lens - this may cause cracking in the lens.

**7.3.** When cleaning the LCD protective lens, use a chamois and non-abrasive, mild cleaner. Do not wipe while dirt or grease is on the lens. Be careful to avoid scratching the lens.

**7.4.** If your boat remains in the water for long period of time, marine growth can reduce the effectiveness of the transducer. Periodically clean the face of the transducer with liquid detergent.

**7.5.** If your boat remains out of the water for a long period of time, it may take some time to wet the transducer when returned to the water. Small air bubbles can cling to the surface of the transducer and interfere with proper operation. These bubbles dissipate with time, or you can wipe the face of the transducer with your fingers after the transducer is in the water.

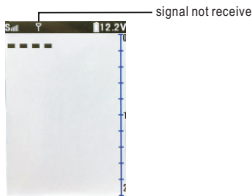
**7.6.** Never leave the unit in a closed car or trunk - the

extremely high temperatures generated in hot weather can damage the electronics.

## 8. Trouble

### 1.The FF918 loses signal in wireless User Mode.

If the FF918, while in Wireless user mode, is not able to get an RF signal from the Wireless sonar sensor, the display will stop updating and the NO SIGNAL will be displayed after several seconds. Whenever reception is lost or the Wireless sonar sensor pulled out from the water for more than a few seconds, the picture will be



displayed until the Wireless sonar sensor is placed back in the water and reception is regained.

- 1)The Wireless sonar sensor uses line -of-sight wireless technology. If objects are placed between the FF918 and the Wireless sonar sensor, reception may be lost.
- 2)The Wireless sonar sensor depth range is 3 to 300feet (1to 100 meters). Erratic readings may occur in water that is shallower than 3 feet. In addition, because of the nature of sonar, this product is not intended for use in swimming pools or small enclosed bodies of water.

3) Reeling the Wireless sonar sensor too fast can cause loss of signal and the screen will freeze.

4) The Wireless sonar sensor may not obtain its maximum RF distance of 980 feet unless the water is smooth. Waves or chop may reduce the RF range significantly.

5) When in very shallow water, I get gaps in the bottom reading and inconsistent digital depth indication.

The Wireless sonar sensor will work reliably in water 3 feet (1 meters) or deeper. The depth is measured from the Wireless sonar sensor. A Wireless sonar sensor to FF918 distance of greater than 100ft may cause intermittent screen display. Excessively rough water may cause the Wireless sonar sensor to submerge, again losing contact.

6) The display shows fluctuating depth readings and excessive clutter, including vertical bars that may be drawn on top of fish icons.

7) The screen jumps and the bottom has an abrupt change; sometimes a vertical line is missing or a black line from top to bottom is displayed.

8) This screen image jump is due to an automatic change in depth. New returns graphed at a different scale will not match up with the historic data already graphed at a higher or lower scale. Vertical lines can also occur as the radio signal from the Wireless sonar sensor is lost and then regained in rough water conditions.

## **9. PRODUCT SPECIFICATIONS**

- 1) Display: 3.5 inch MVA TFT LCD
- 2) Sonar operation frequency: 200KHz
- 3) Back lighting: On/off White LED
- 4) Power requirement: 11-13V DC
- 5) Sensor coverage: 45 degrees
- 6) Depth range max/min: 300feet(100meters)  
/3 feet(1meters)
- 7) Operational range: 980 feet (300 meters)
- 8) Operational wireless frequency: 433.92 MHz

