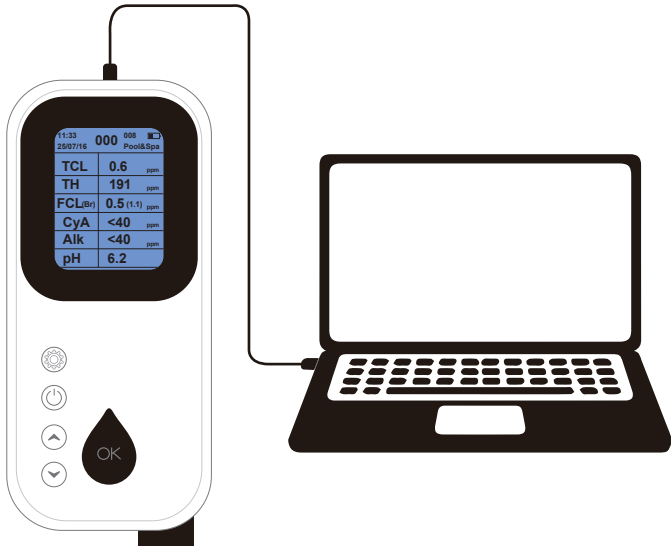



# DATA EXPORT INSTRUCTION

Home Pool Multi-Parameter Kit



To export the data, you'll need the software and a micro-USB data cable. Simply scan the QR code to download the software, which is compatible with Windows 7, 10, and 11.



Scan for PC Software  
[https://cd50.net/526\\_S](https://cd50.net/526_S)

1

# STEP BY STEP EXPORT INSTRUCTION

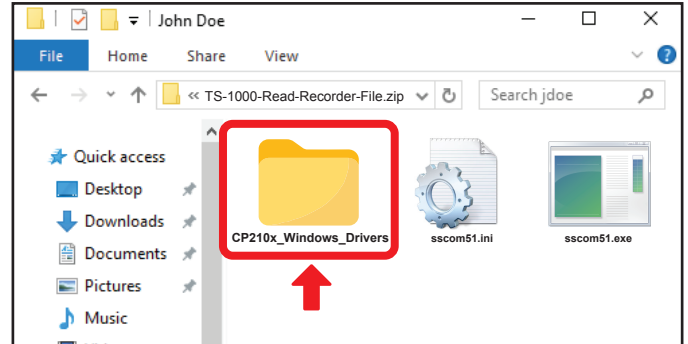
## STEP 1:

After downloading the software's compressed file, please extract it.



## STEP 2:

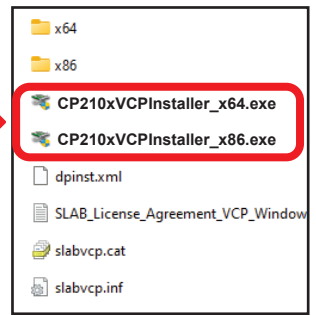
Open the extracted folder and navigate into the **CP210x\_Windows\_Drivers** subfolder.



## STEP 3:

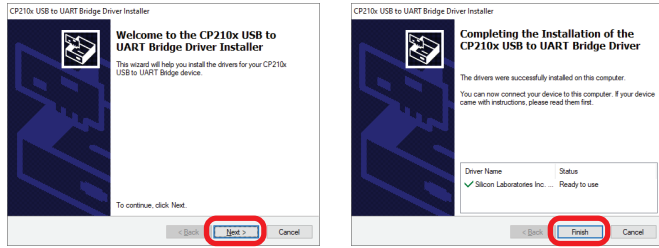
Choose and install the correct USB driver matching your computer's operating system architecture:

- **For 64-bit Windows:**  
Double-click CP210xVCPInstaller\_x64.exe
- **For 32-bit Windows:**  
Double-click CP210xVCPInstaller\_x86.exe



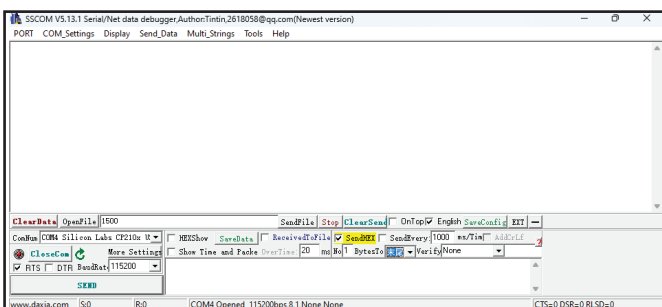
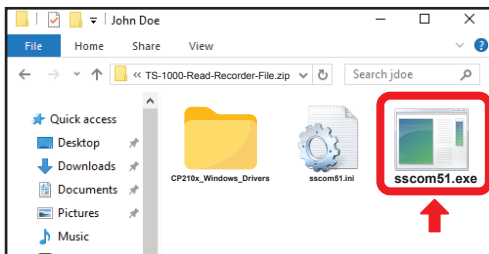
2

Follow any on-screen prompts to complete the driver installation.



## STEP 4:

Navigate back to the main extracted folder and double-click **sscom51.exe** to start the application.

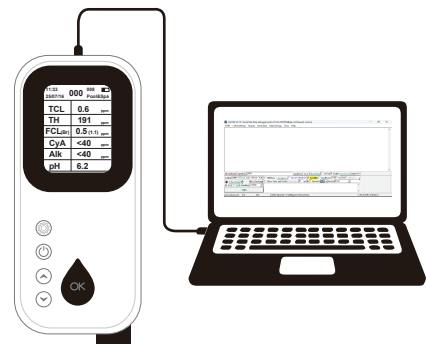


Software Interface

3

## STEP 5:

Using the provided micro USB cable, connect the meter to your computer.

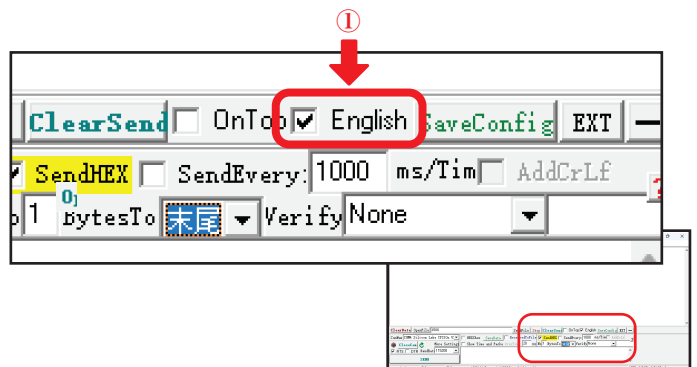


## STEP 6:

Configure the serial port in sscom51:

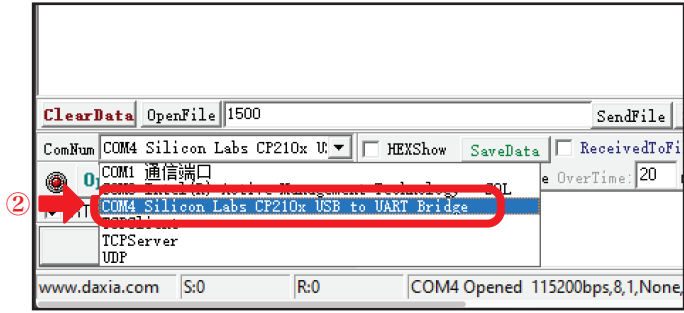
### ①. IMPORTANT:

Make sure to tick this option  English . If not, the software display may become distorted or unreadable.

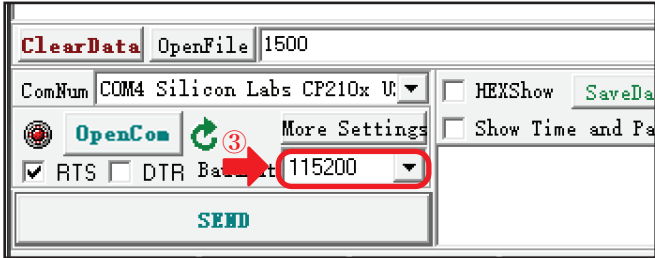


4

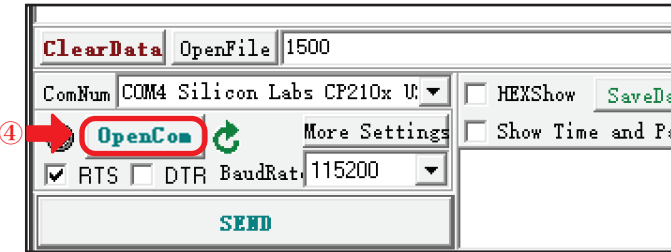
- ②. In the sscm51 software, locate the Serial Port(ComNum) dropdown menu. Select the port labeled **Silicon Labs CP210x USB to UART Bridge**



- ③. Set the Baud Rate to 115200.



- ④. Click the "OpenCom" button to establish the connection.

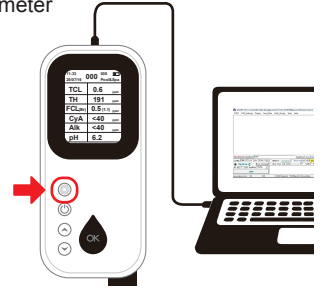


5

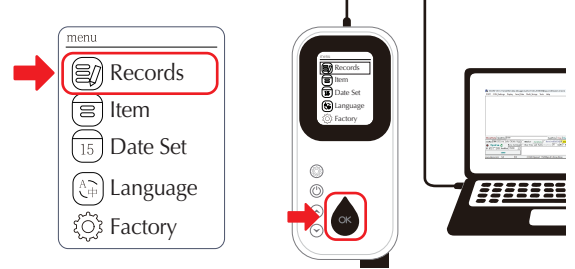
**STEP 7:**

Step 7 : Initiate data transfer from the meter

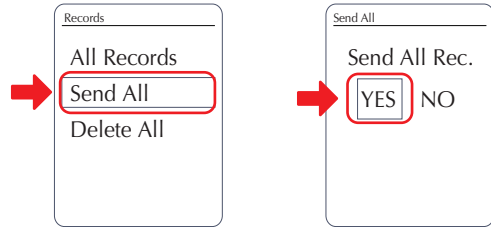
- ①. On the meter, press the key.



- ②. Select Records and press to proceed.



- ③. Select 'Send All', then press to proceed. Choose 'Yes' and press again to begin uploading records to sscm51. Wait for the transfer to complete.

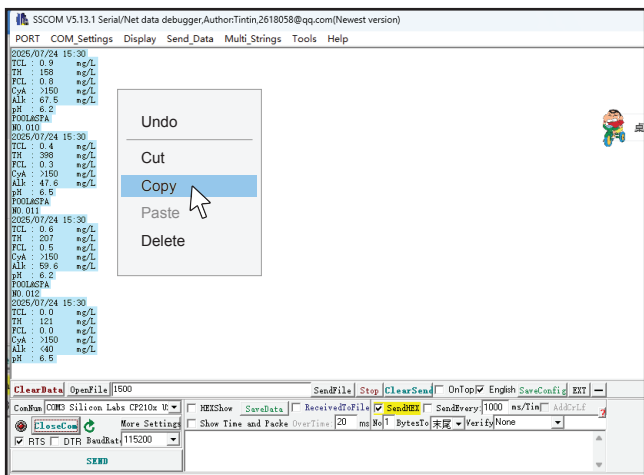


6

**STEP 8:**

Save the received records

- ①. Within the sscm51 software's main text display area, press **Ctrl+A** to select all received records.
- ②. Press **Ctrl+C** to copy the selected records, or right-click and select 'Copy'.

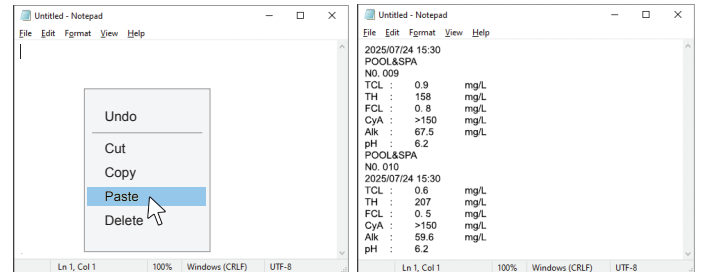


- ③. Open Notepad (or any text editor).

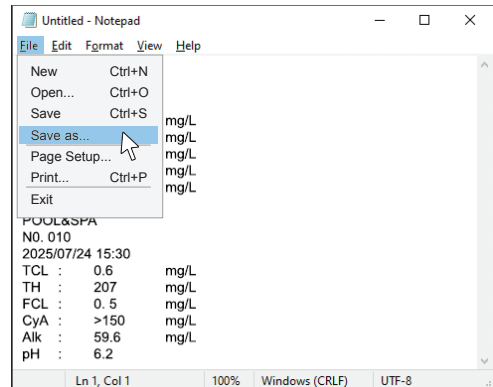


7

- ④. Press **Ctrl+V** to paste the records, or right-click and select 'Paste'.



- ⑤. Save the Notepad file to your desired location.



8