

ORP/REDOX METER

Instruction manual



SCAN THE QR CODE

to download

USER MANUAL
in different languages
and SOFTWARE



www.cd50.net/228



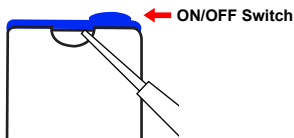
**TUTORIAL VIDEO
ON HOW TO USE**



**Need more help?
CONTACT US.**

BATTERY INSTALLATION

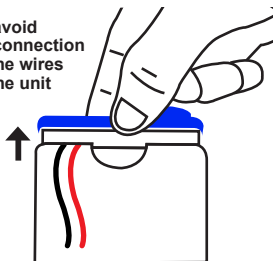
Take the screw driver included in the set, and insert it between the meter's body and the blue top cover of the meter.



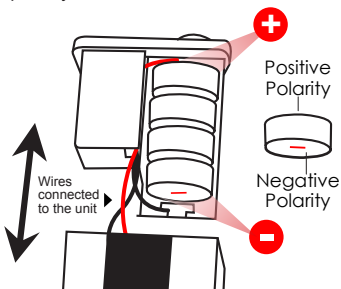
NOTE:

When installing the batteries, **LIFT GENTLY.**

To avoid disconnection of the wires to the unit

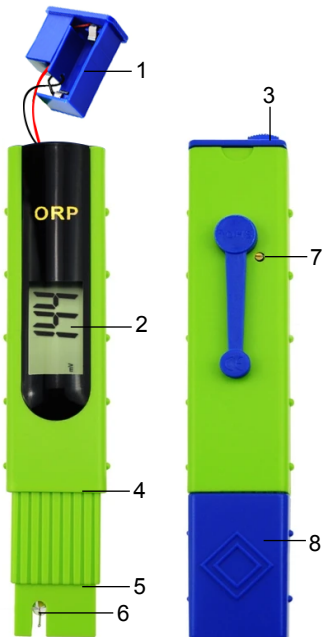


Insert the batteries into the battery compartment. Pay attention to the polarity of the batteries



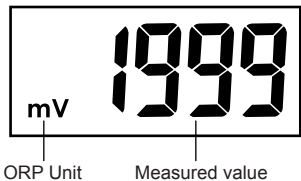
When you cannot turn the unit ON, or if the LCD display fades, you need to change the batteries.

PRODUCT DESCRIPTION

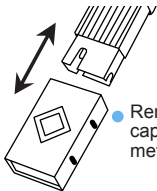


1. Battery compartment
2. Screen Display
3. ON/OFF Switch
4. Maximum immersion level
5. Minimum immersion level
6. Sensor
7. Adjustment trimmer (for calibration)
8. Protective cap

SCREEN DISPLAY



OPERATION



- Remove the protective cap at the bottom of the meter.

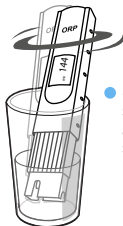
off → on



- Turn on the unit by the ON/OFF switch, it is located at the top of the unit.



- Dip the electrode into the water sample taken. The water level should be placed in between the minimum immersion level and maximum immersion level.



- Stir gently the water sample to be tested, and wait until reading stabilizes, read the result value.

- Turn off the unit after use.

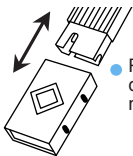
- Rinse the electrode with distilled water and dry it with a tissue, and make sure to store it with the protective cap.

NOTE:

Rinse the electrode with distilled water when testing a new solution.

CALIBRATION

This electrode is pre-calibrated at the factory, however, re-calibration is recommended when it is left unused for a long period.

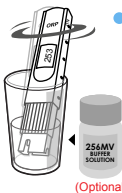


- Remove the protective cap at the bottom of the meter.



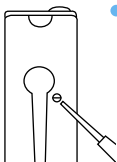
- Dip the electrode into the distilled water for about 5 minutes (at least 1~2 hours if it is left unused for a long period). Turn on the unit by the ON/OFF switch, it is located on top of the unit.

◀ Distilled water



- Dip the electrode into the 256mV ORP standard solution (or other ORP standard solution you have), then stir gently to shake off the bubbles on the electrode until the reading become stable.

(Optional)



- With the included screwdriver, slowly turn the adjustment trimmer located at the back of the unit until LCD display shows 256mV (or the standard value of the ORP solution you selected to calibrate).

- Turn off the unit by the ON/OFF switch.
- Clean the electrode with distilled water, and gently dry with paper towel.

To get 256mV ORP Calibration Solution, please contact the seller.

SPECIFICATION

Measure range:	-1999~1999mV
Resolution:	1mV
Accuracy:	±5mV
Power Supply:	4 x 1.5V (AG-13 button cell)
Operating temperature:	0°C ~ 50°C
Calibration:	1 point
Dimension:	155 x 31 x 16mm
Weight:	60g

ORP LEVELS

ORP Level (mV)	Application
0 - 150	No practical use
150 -250	Aquaculture
250 -350	Cooling Towers
400 - 475	Swimming Pools
450 - 600	Hot Tubs
600	Water Disinfection
800	Water Sterilization

MAINTAINANCE

- Please always cover the electrode with the protective cap when not in use.
- Avoid touching or rubbing the glass bulb may help prolong the life of the electrode.



It is normal if you find white crystal on the probe (this will not affect the use of the electrode), please soak the probe into the distilled water before using.

OPTIONAL



To get 256mV ORP Calibration Solution, please contact the seller.

www.cd50.net/256/