

Thank you very much for your patronage and choosing our products. Before you use this product, please read this manual carefully as it will familiarize you with the correct operating procedure.

Notice:

Before using this instrument, please read this manual carefully, improper operation may cause harm to users. Please follow the instructions and pay special attention to the insulation around the connector to avoid electric shock or personal injury.

1. PRODUCT FEATURES

- Type K/J/T measurement with 4 channels display
- °C/°F temperature unit switching
- Data hold, Max, Min measurement function
- Auto power off with disable function
- Real-time data logging via PC connection, it can display real-time data sheet and data charts
- Export and print data sheet and charts
- PC software is compatible with Win7, Win8, Win10, Win11
- HI/LOW limit can be set separately for each channel
- Audible and visible alarm
- Battery strength indicator

SCAN THE QR CODE
to download the **USER MANUAL** in different languages and **SOFTWARE**

TUTORIAL VIDEO ON HOW TO USE

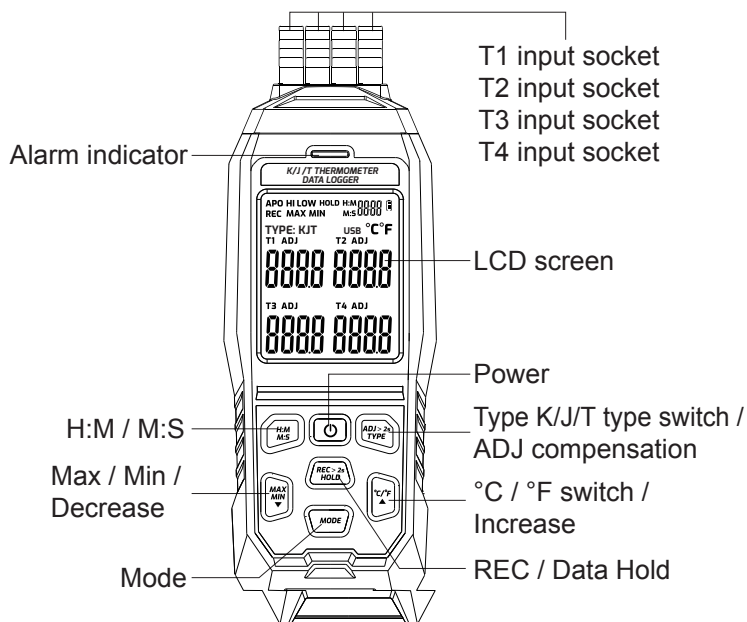
Need more help? **CONTACT US.**

www.cd50.net/37

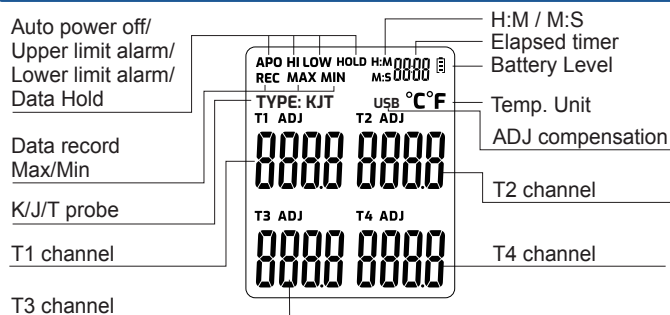
2. SPECIFICATIONS

Main Unit	Range	K-type: -200~1372°C (-328~2501°F) J-type: -200~1200°C (-328~2192°F) T-type: -200~400°C (-328~752°F)
	Accuracy	±(0.2%+0.7°C)
Type K probe supplied	Range	-50°C~300°C (-58°F~572°F)
	Accuracy	±1.5%
Resolution		(-99~999.9°) 0.1°C/°F; (-200~-100°, ≥1000°) 1°C/°F
Upper limit alarm		Default value: 1300°C
Lower limit alarm		Default value: -200°C
ADJ compensation		-9.9~+9.9°C Probe error range compensation
Data logger		5000 groups
Tripod nut		1/4 inch nut
Sampling rate		1 time/s
Auto power off		15 mins
Working environment		-10~50°C, max 80% RH, indoor altitude <2000m
Storage environment		-10~50°C, max 70% RH (battery removed)
Product size		177 x 70 x 35mm
Screen size		53 x 44mm
Weight		Approx. 189g (battery not included)
Power Supply		3 x 15V AA batteries or Micro USB input DC 5V
Accessories included		1 x Thermometer
		4 x Type K Thermocouple
		3 x AA Battery
		1 x USB cable 1 x Carrying bag

3. METER DESCRIPTION



4. DISPLAY DESCRIPTION



5. BUTTON FUNCTION DESCRIPTION



POWER BUTTON

Press the button to turn on/off the meter



REC >2s / HOLD

- Press the button to freeze/release the displayed reading
- Long press the button over 2 seconds to start / stop recording



°C / °F INCREASE

- Press the button to select °C / °F
- In setting mode, press the button to increase the value



MAX / MIN / DECREASE

- Press the button to toggle between MAX, MIN and real time value mode
- In setting mode, press the button to decrease the value



H:M / M:S

- In recording mode, you can press the button to toggle the elapsed time format between hours and minutes (H:M) and minutes and seconds (M:S).

Note: H:M minimum time interval is 1 min and M:S is 5s



ADJ >2s / TYPE

- Press the button to toggle between K, J, and T
- Long press the button over 2 seconds to enter/exit temperature compensation mode.

4

7-2. View the stored data in the meter

Under measuring mode, press button twice to enter data view mode. The number of groups indicator will appear on the right-hand corner of the LCD display to indicate it is in data review mode. Press the or button view the data one by one

NOTE: To clear up the stored data, long press the and buttons simultaneously over 2 seconds under data view mode. The number of groups will show 0000.

7-3. Upper limit alarm setting

Under measuring mode, press button 3 times to enter upper limit setting. The default value is 1300°C, press the or button to adjust the alarm value. Under this mode, press the button again to switch between channels. The instrument will give an audible and visible alarm when the measured value exceeds the setting value and the HI sign will flash on the screen.

7-4. Lower limit alarm setting

Under measuring mode, press the button continuously until "LOW" icon appears on the LCD display. The default value is -200°C, press the or button to adjust the alarm value. Under this mode, press the button again to switch between channels. The instrument will give an audible and visible alarm when the measured value is below the setting value and the LOW sign will flash on the screen.

Note: The custom High/Low alarm threshold will be saved even power-off or replace the batteries.

6



MODE

- Press the button to toggle between sampling interval, view stored data, High / Low limit alarm setting.
- Long press the button over 2 seconds to exit the setting

6. GENERAL MEASURING PROCEDURE

- Power on the meter by pressing the button after installing 3pcs AA batteries.
- Press the button to select temperature sensor type K, J, or T.
- Press the button to select the temperature unit °C or °F.
- Insert the Type K, J, or T probes into the "T1, T2, T3, T4" input socket. The LCD will show the 4 channels temperature value at the same time.

*If the certain channels do not insert the temperature probes, the relative channel display will show over range "----"

- Press the button to freeze/release the displayed reading or press the button to check MAX, MIN value.

7. SETUP MODE

7-1. Setting sampling interval for recording on the meter

Under measuring mode, press button once to enter sampling interval setting. You can select the desired sampling rate by pressing the or button. The available settings are: 5s, 10s, 30s, 60s, 30min, 60min, 12h and 24h.

5

8. DISABLE/ENABLE AUTO POWER OFF FUNCTION

- The auto power off function switches on by default, the screen shows the APO symbol when turning on the meter. Only if you stop using it for 15 minutes will it trigger the automatic power off mode.
- To disable Automatic Power Off: Before startup the device, long press the and buttons simultaneously for 3 seconds until APO OFF icon appears on the screen. APO symbol will disappear after disabling the Auto Power Off function.

Note: The auto power off function will restore when restart the meter.

9. TEMPERATURE COMPENSATION FUNCTION

- Under measuring mode, long press the button over 2 seconds to enter temperature adjustment mode for CH1.
- Press the or button to adjust it to the desired offset value,
- Press the button again to switch between channels
- Repeat step b for the other channels
- Long press the button over 2 seconds to save and exit.

10. DATA LOGGING AND PC INTERFACE

10-1. Types of data recording

Data logging on the software: Automatically log data onto the software where the number of data points is unlimited.

Data logging on the meter: Automatically log up to 5000 readings onto the meter via push-button press.

7

10-2. Data logging on the software

a. Install the software. Please download and install the free EnvironmentalTester software from the QR code or URL below.

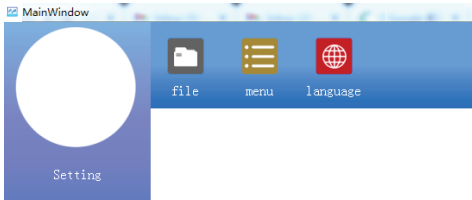


QR CODE

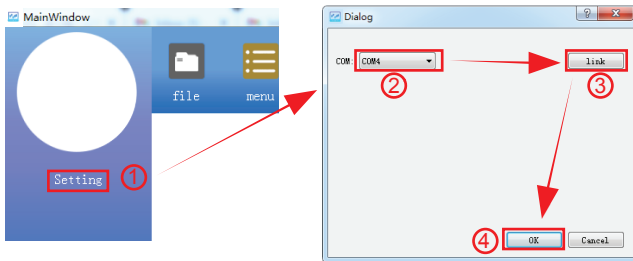
www.cd50.net/37

URL

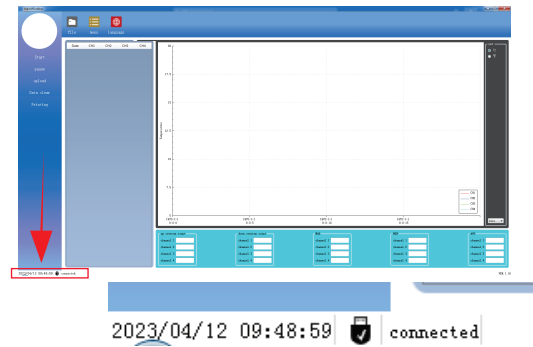
b. Double click EnvironmentalTester to open it and then connect the thermometer to the computer via USB cable included in the set.



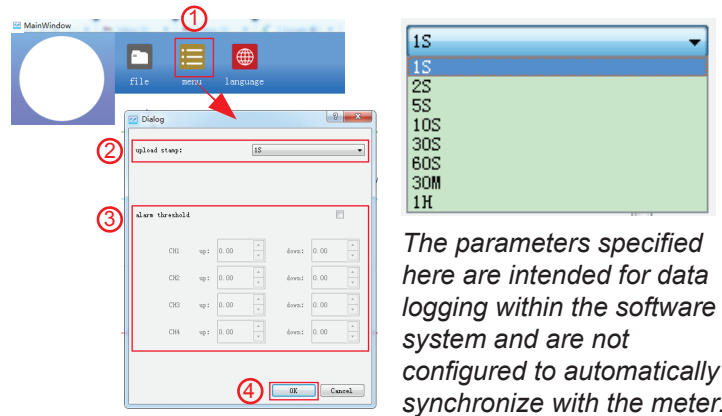
c. Click "Setting" to select the corresponding COM port, then click "link" and then click "OK" to confirm.



d. Once it is ready to use, the software interface should display as below.



e. Configure parameters. Click menu button located at the top of the software, it will pop up a dialog window. You can select the desired sampling rate and alarm threshold there and click OK to confirm. The available settings are: 1s, 2s, 5s, 10s, 30s, 60s, 30min, and 1h.



The parameters specified here are intended for data logging within the software system and are not configured to automatically synchronize with the meter.

8

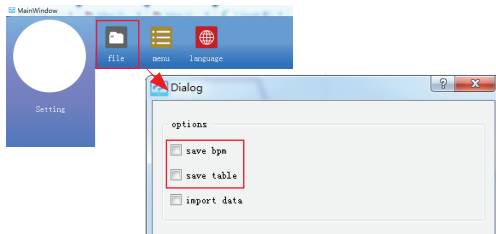
9

f. Select the desired temperature unit from the top-right corner of the software.



g. Press the Start / pause button located at the left of the software to start / stop recording.

h. To export the data points, please click the "file" button located at the top of the software and then select to save them in bpm or table or both format.



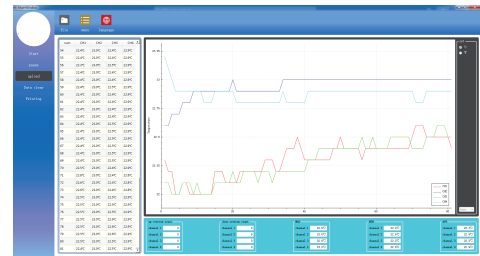
IMPORTANT!!!

To prevent the loss of data points recorded in the software, it is necessary to export them before exiting the program or uploading the data points stored in the meter. Failure to do so will result in the deletion of all recorded data points in the software.

10-3. Data logging on the meter

- Set the desired sampling rate in 7-1
- Long press the **REC-2s HOLD** button over 2 seconds to start/stop recording, "REC" symbol will be flashing when in recording mode.
- Run the software and then connect the thermometer to the computer via USB cable. (Ref to step b ~ d in 10-2).

d. Click upload and wait few seconds, the data points stored in the meter will be synchronize to the software.



e. To export the data points, click the "file" button located at the top of the software and then select to save them in bpm or table or both format.

11. BATTERY REPLACEMENT

- When the battery level is low, an empty battery icon will appear, indicating that the batteries need to be replaced.
- To replace the batteries, please follow these steps:
 - Remove the battery compartment cover.
 - Take out the 3pcs AA batteries.
 - Pay close attention to the battery polarity when placing the new batteries into the compartment.
- Make sure to fasten the compartment cover securely after replacing.

12. MAINTENANCE

- Do not measure for a long time under high temperature and high humidity environment
- Please remove the battery if not used for along time.
- If your device does not work properly, and the repair requirements was confirmed by the manufacturer or dealer. The user should provide a text failure description and packing list, and the packaging should be well cushioned and protected.

10

11