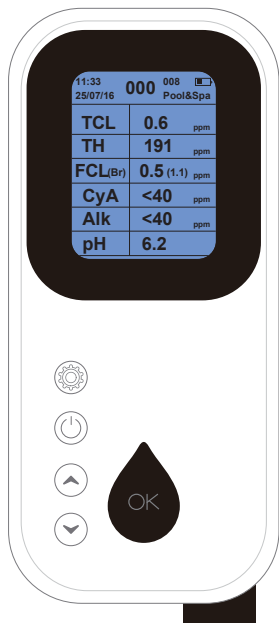


# HOME POOL MULTI-PARAMETER KIT

## USER MANUAL



**SCAN THE QR CODE**  
to download the **USER MANUAL** in different languages and **SOFTWARE**

**TUTORIAL VIDEO ON HOW TO USE**

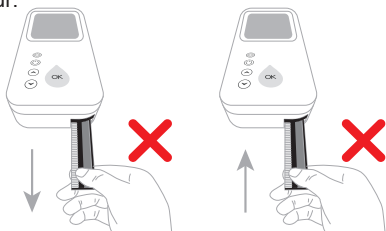
Need more help? **CONTACT US.** <https://cd50.net/526>

1

②. Gently place the strip flat (not at an angle) and push it in until it clicks into place. Ensure the pads on the strip are facing up when placing it in the Table.

pads on the strip are facing up

③. Do not forcibly pull or push the Table; otherwise, a 'Table Error' warning will occur.



④. When removing or installing the Table (for cleaning), please follow these steps:

① Press to extend the TABLE.

② Before retracting, gently push the Table until it clicks into place.

③ Press to retract the TABLE.

3

## PRODUCT COMPONENTS

	<b>On/Off Button:</b> press to turn ON, while press and hold to turn OFF
	<b>Return Button:</b> return to testing interface
	<b>Clear Error Button:</b> When an error occurs, press it to clear before any operations.
	<b>Setting Menu Button</b>
	<b>Return Button:</b> return to previous setting interface
	Up/Scroll Button
	Down/Scroll Button
	Confirm/Read Button
	Table

## BEFORE USE

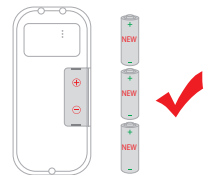
For accurate test results and to maintain the optimal efficiency of the meter, please read the user manual thoroughly before use.

①. The meter **MUST** be placed horizontally and properly during operation.

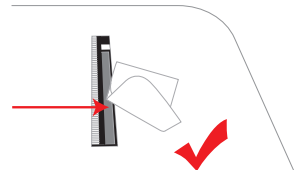


2

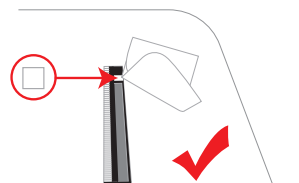
⑤. Replace all batteries with new ones when "low battery" appears on the screen. Do not mix old and new batteries.



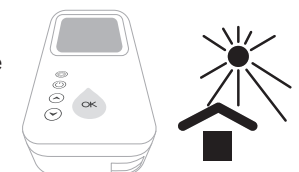
⑥. Between tests, thoroughly clean and dry the Table, especially when performing multiple tests in succession



⑦. Wipe the Table clean regularly (monthly) with damp wipes to prevent false light source alarms and ensure accurate test results.



⑧. Dry the meter when not in use, and store it in a dry indoor environment, placed horizontally and properly.



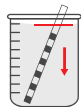
⑨. Only use the meter supplied with the kit.

4

## OPERATIONS



①. Press to turn on the meter.



②. Fully immerse the test strip in water for 2 seconds.

**NOTE:** Make sure all the pads on the test strip are fully immersed in water



③. Press , the meter will start a 15-second countdown.



④. Shake off excess liquid when the meter prompts "Place Strip".



⑤. Place the test strip in the correct position.



⑥. Press and wait for the test results.

⑦. The results will be displayed.

⑧. Press and hold the button until the meter turns off.

### NOTES:

In case of abnormal test results:

1. Retest to confirm the result.
2. Consult a professional for further guidance.

## SETTINGS

### MENU SCREEN

①. Press to enter the menu screen:

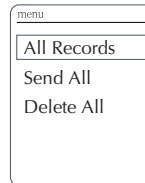
②. Use or to scroll through the menu options, and press to select.



5

## RECORDS

①. Press or to select a menu option, and press to view, send, or delete recorded test results.



## DATE SET

The Year, Month, Day, Hour, and Minute can be set.

- ①. Press or to adjust the displayed value.
- ②. Press to move to the next value.
- ③. Press to return to the Settings menu after completing the setup.

## FACTORY

- ①. Press to enter a list of factory menu selections.
- ②. Press or to select menu or adjust value, and press to enter each menu or confirm settings.

Factory		
About	About	Model, number, hardware version, software version, test strip version, compilation date, etc.
Voice Switch	Voice Switch	ON/OFF
Sleep Time	Sleep Time	Set the standby time, ranging 0~99 minutes
Count Down	Count Down	
System Reset	System Reset	A password is required: 0431
Adjust Sens.	Adjust Sens	

## DATA EXPORT VIA USB AND SOFTWARE

- ①. The device can store up to 100 sets of data, which can be transferred to your computer.
- ②. To export the data, you'll need the software and a micro-USB data cable. Simply scan the QR code to download the software, which is compatible with Windows 7, 10, and 11.



Scan for PC Software  
[https://cd50.net/526\\_S](https://cd50.net/526_S)



Step-by-step Export  
instructions

6

## SPECIFICATION

TCL (Total Chlorine)	0.0~10ppm
TH (Total hardness)	100~500ppm
FCL (Free Chlorine)	0.0~10ppm
Br (Bromine)	0.0~20ppm
CyA (Cyanuric Acid)	40~150
Alk (Total Alkalinity)	40~180
pH	6.2~8.4
Display	2.4", 320 x 240 pixel resolution
Light Source	1 LED
Power	3 LR6 1.5V "AA" batteries
Languages	Chinese, English
Use	Indoor and outdoor
Temperature	Operation: 0~50°C; Storage: -20~60°C
Humidity Range	0~93% RH
Operation Environment	Clean, ventilated, no direct light, no strong electromagnetic interference
Calibration	Factory set
Data Logger	100 test results stored
USB Port	Yes. But USB data cables are prepared by users
Auto Shut Off	10 minutes
Dimensions	16.8cm x 7.5cm x 2.9cm
Weight	0.176kg

7

## WARRANTY

This meter is warranted to be free from defects in parts and workmanship for 1 year from the date of shipment.

This warranty does not cover defects resulting from user actions such as misuse, operation outside of specified conditions, improper maintenance, or unauthorized repairs.

We expressly disclaims any implied warranties of merchantability or fitness for a particular purpose and shall not be liable for any direct, indirect, incidental, or consequential damages.

## ERROR AND PROPOSED MEASURES

Signs	Possible Causes	Proposed Measures
Light Error	Misuse and pollution of sensor	Wipe and dry the Table
Table Error	Misuse and not in the right position	Press  or  to check whether the Table is in the correct position
Memory Error	Storage anomalies	Please contact customer service
Strip Error	Strip in not in the right position	Replace the test strip
Rec. Fulling	Reminder: record storage nearing full	Manually delete records
Rec. Filled	Reminder: record storage full of 100. All test records will be automatically cleared!	

8